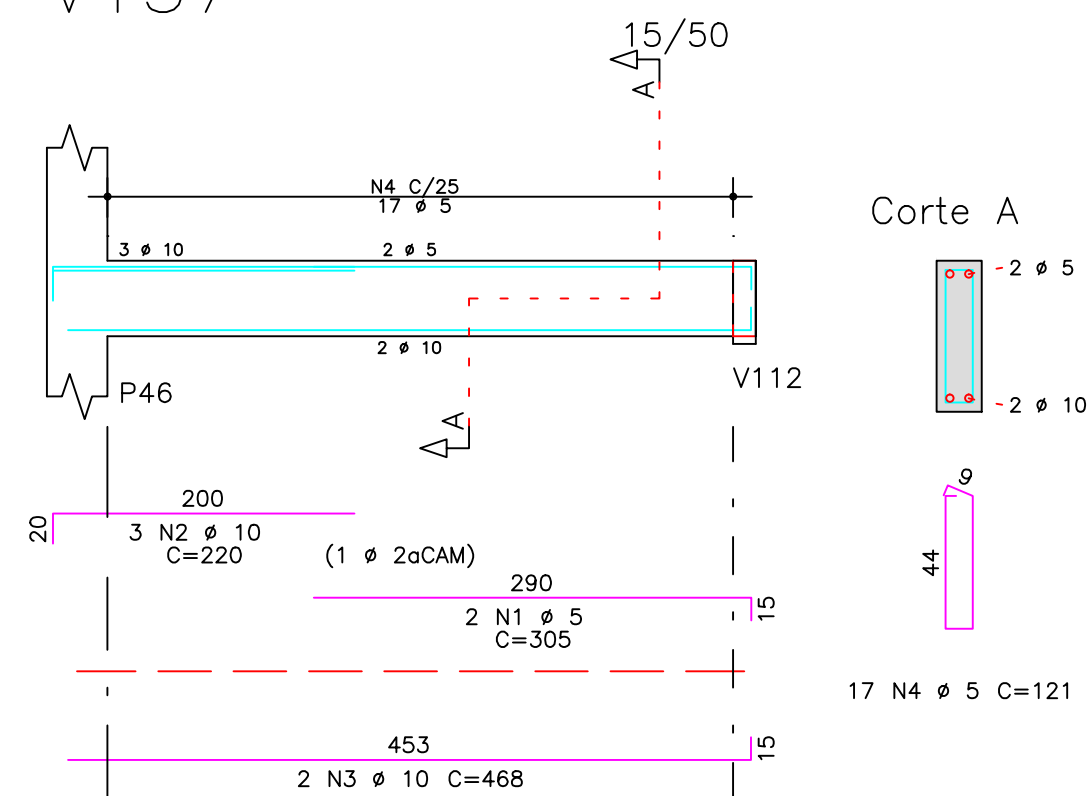
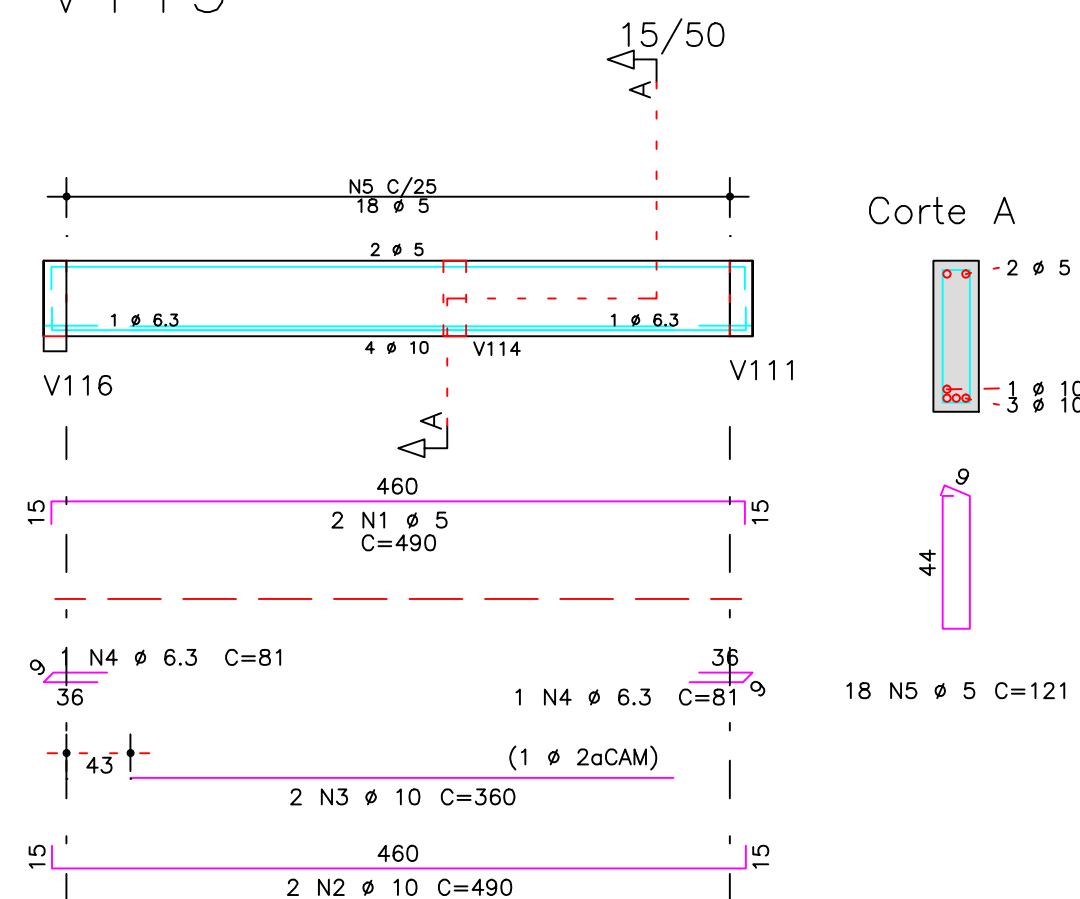


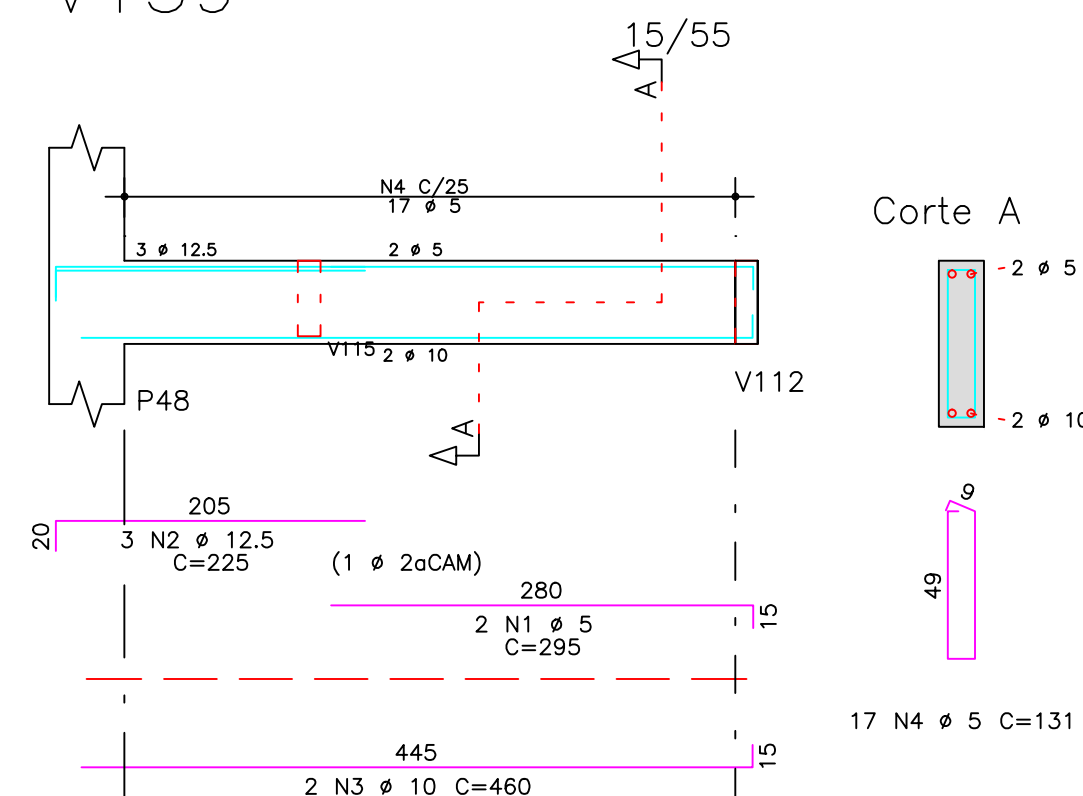
V137



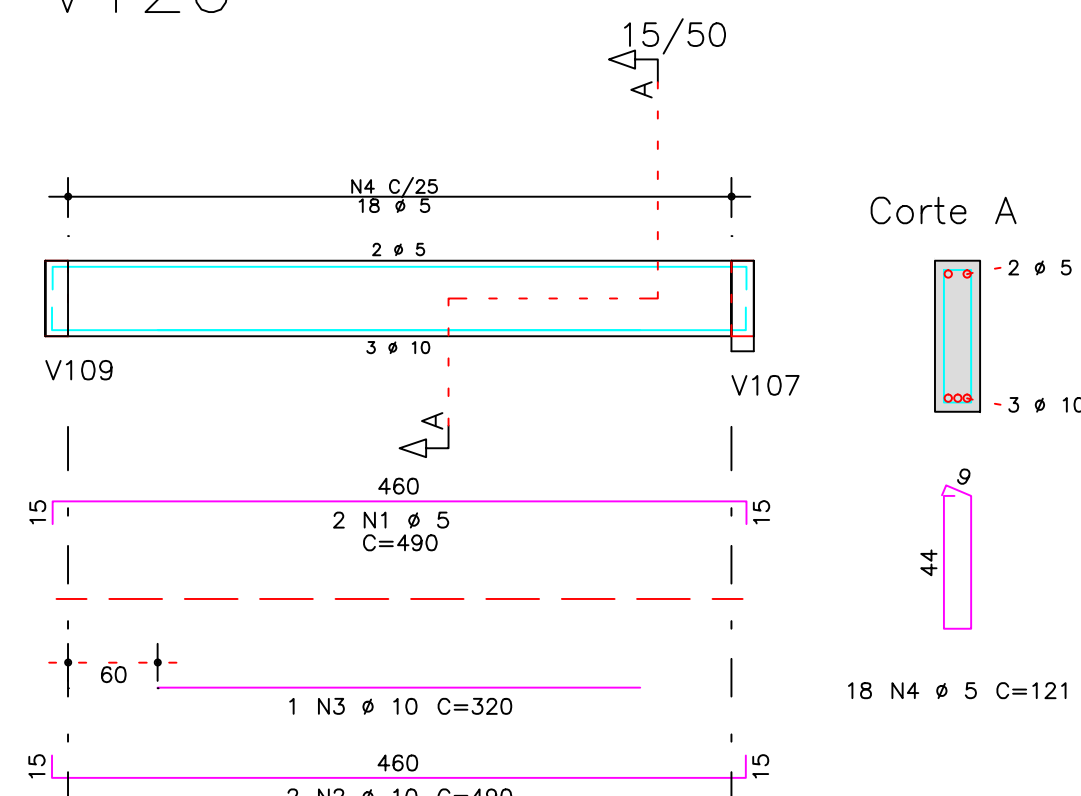
V119



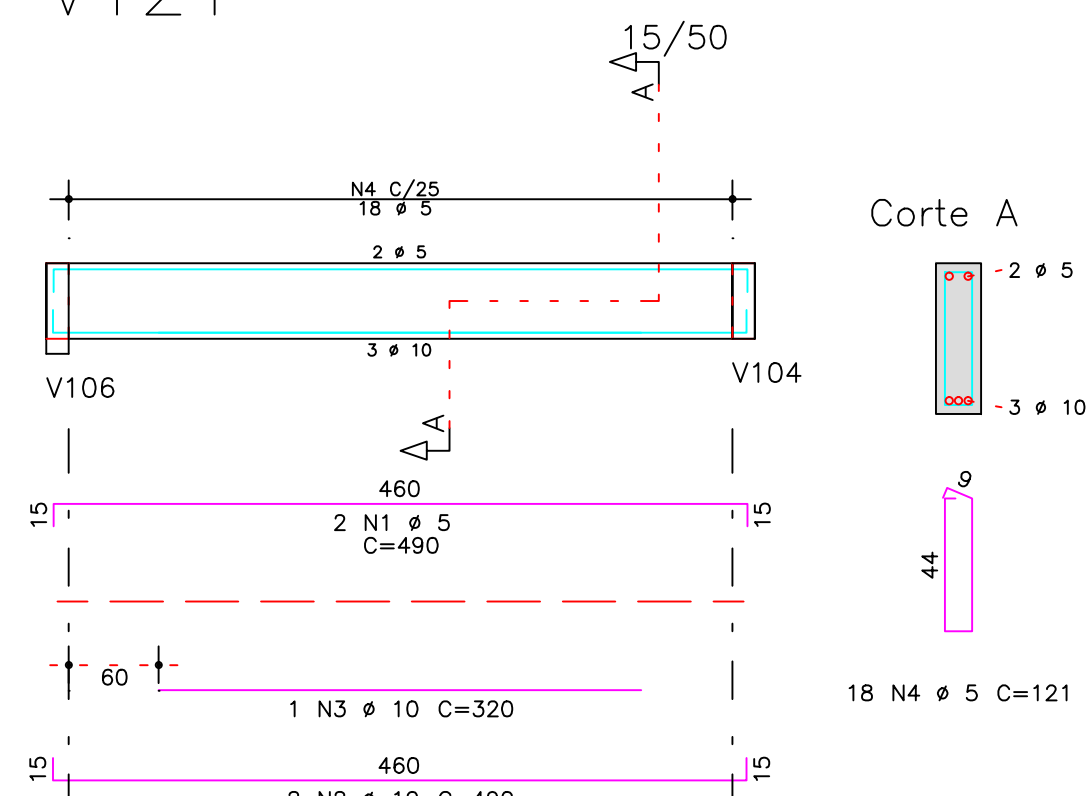
V139



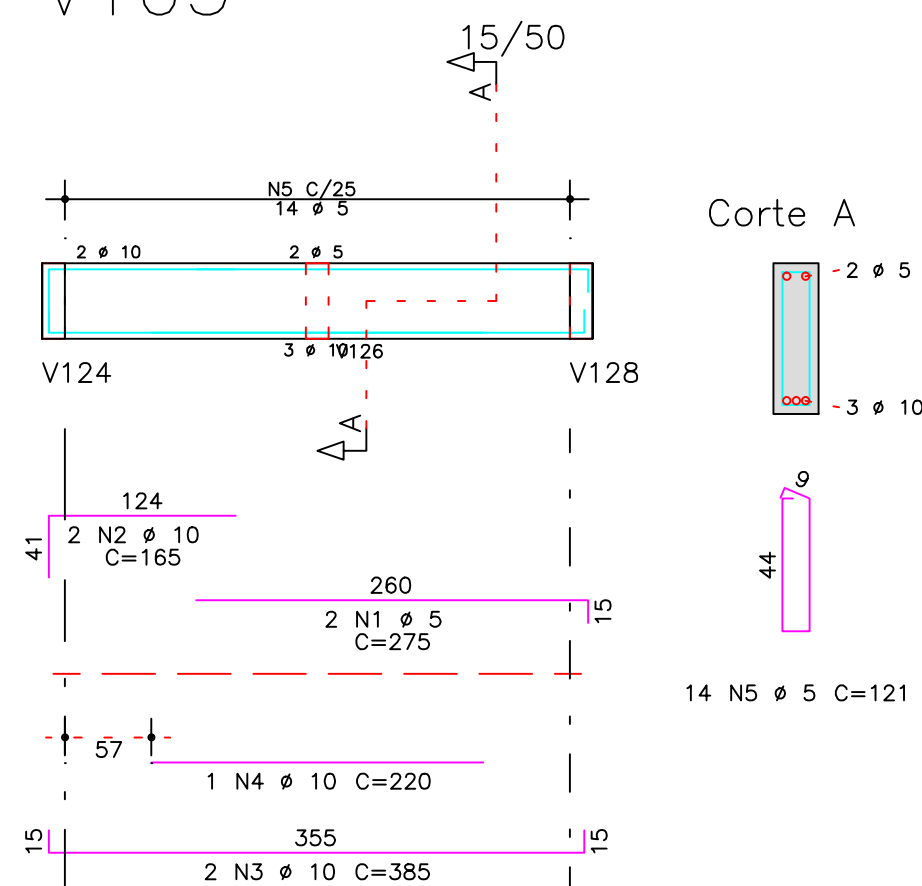
V120



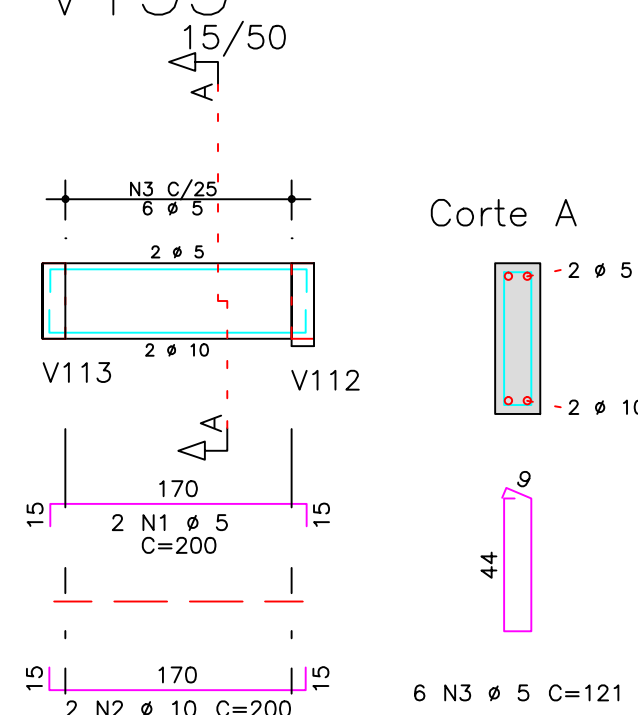
V121



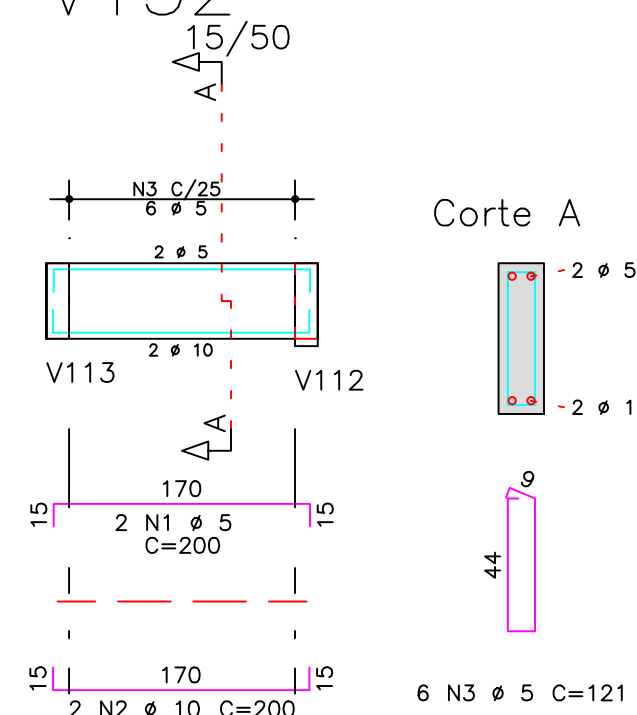
V105



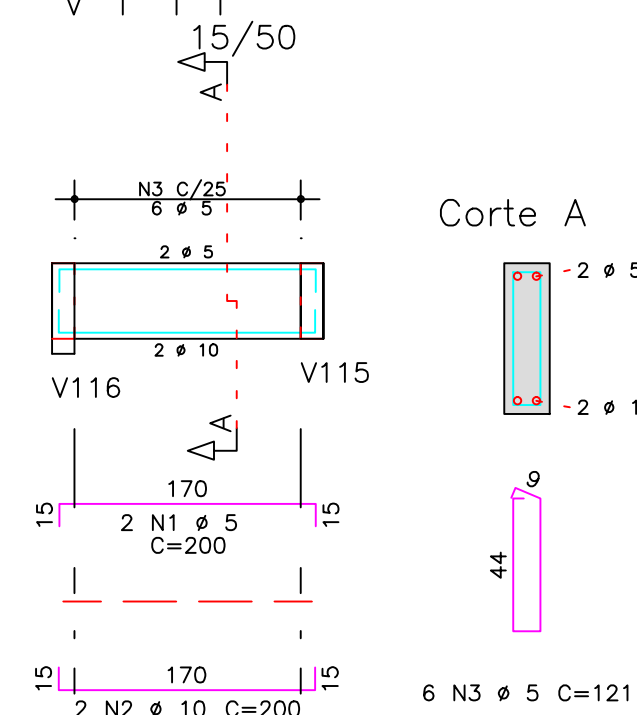
V135



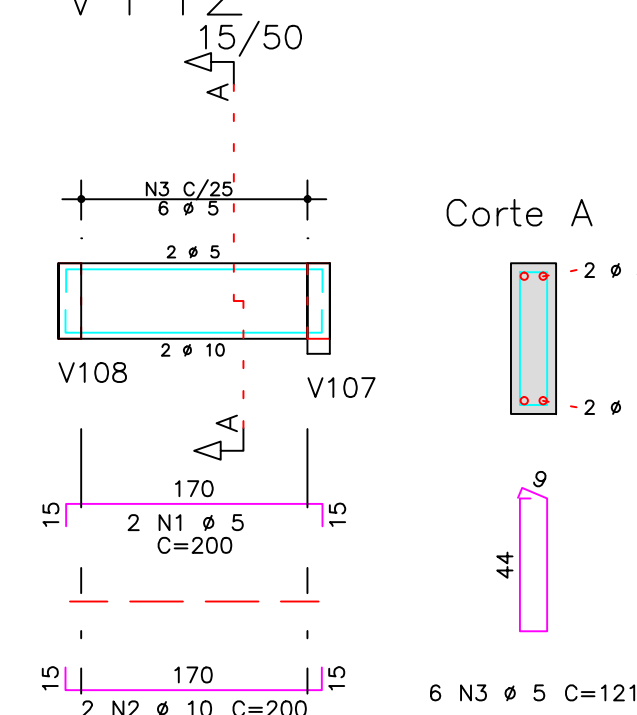
V132



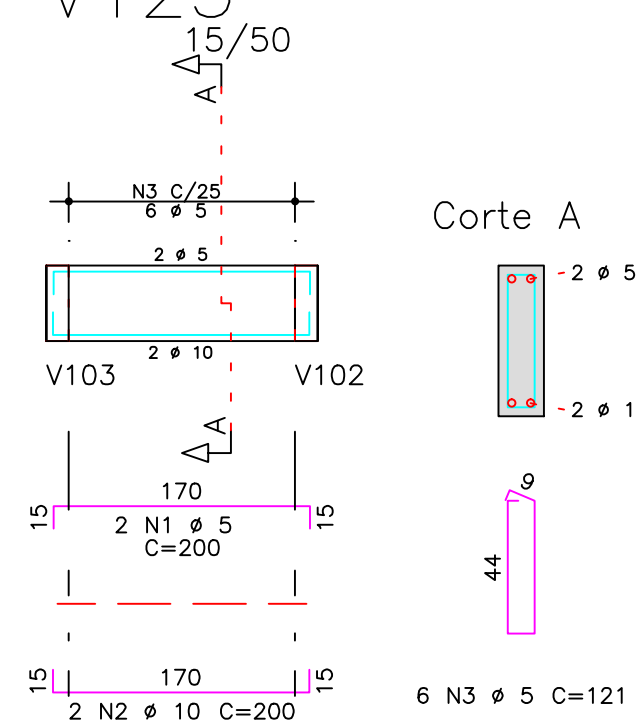
V141



V142



V125



	AÇO	POS	BIT (mm)	QUANT	COMPRIMENTO UNIT (cm)	TOTAL (cm)
V105	60B	1	5	2	275	550
	50A	2	10	2	165	330
	50A	3	10	2	385	770
	50A	4	10	1	220	220
	60B	5	5	14	121	1694
V119	60B	1	5	2	490	980
	50A	2	10	2	490	980
	50A	3	10	2	360	720
	50A	4	6.3	2	81	162
	60B	5	5	18	121	2178
V120	60B	1	5	2	490	980
	50A	2	10	2	490	980
	50A	3	10	1	320	320
	50A	4	5	18	121	2178
V121	60B	1	5	2	490	980
	50A	2	10	2	490	980
	50A	3	10	1	320	320
	50A	4	5	18	121	2178
V125	60B	1	5	2	200	400
	50A	2	10	2	200	400
	60B	3	5	6	121	726
V132	60B	1	5	2	200	400
	50A	2	10	2	200	400
	60B	3	5	6	121	726
V135	60B	1	5	2	200	400
	50A	2	10	2	200	400
	60B	3	5	6	121	726
V137	60B	1	5	2	305	610
	50A	2	10	3	220	660
	50A	3	10	2	468	936
	60B	4	5	17	121	2057
V139	60B	1	5	2	295	590
	50A	2	12.5	3	225	675
	50A	3	10	2	460	920
	60B	4	5	17	131	2227
V141	60B	1	5	2	200	400
	50A	2	10	2	200	400
	60B	3	5	6	121	726
V142	60B	1	5	2	200	400
	50A	2	10	2	200	400
	60B	3	5	6	121	726

RESUMO AÇO CA 50-60			
AÇO	BIT (mm)	COMPR (m)	PESO (kg)
60B	5	228	35
50A	6.3	2	0
50A	10	101	63
50A	12.5	7	7
Peso Total	60B =		35 kg
Peso Total	50A =		69 kg

O acesso ao Modelo Estrutural em dimensão pode ser executado pelo QR CODE ao lado, podendo acessar via celulares, tablets e quaisquer outros dispositivos.



		<b>Schuring &amp; Schuring Ltda.</b> Escritório Técnico B.E.SCHURING - Projetos de Engenharia Av. XV de Novembro, 489 - Porto 2o. Andar - Cuiabá MT Fone:(065) 321 9959 - Fax:(065) 623 5066 - Email - schuring@terra.com.br	
<b>PROJETO ESTRUTURAL</b>	PROJETO:	PROPRIETÁRIO:	OBRA:
		PREFEITURA MUNICIPAL VARZEA GRANDE MT	<b>PREFEITURA MUNICIPAL DE VARZEA GRANDE MT</b>
	RESP. TEC. EXECUÇÃO:		Unid. Básica de Saúde <b>UBS-MATILDE CURVO DE MORAES</b>
			END.: Av. dos Bandeirantes. Conj. Habit. José Carlos Guimarães, Várzea Grande-MT
	AUTORES DO PROJETO:		ASSUNTO:
	Benedito Elias Schuring Eng. Civil - CREA 715/D-MT		<b>BALDRAME DET ARM VIGA</b>
	André Luiz Schuring Eng. Civil - CREA 8697/D-MT		PECAS DETALHADAS V105 / V119 / V120 / V121 / V125 / V132 V135 / V137 / V139 / V141 / V142
		FOK:	DIREITOS AUTORES RESERVADOS VERIFICAR MEDIDAS NA OBRA
		ESCALA:	ARQUIVO:
		DATA:	FOLHA No.
		15/07/2019	<b>18</b>